

# Trends in milk production, milk price and dairy farm performance in Australian States

David Beca [davidbeca59@gmail.com](mailto:davidbeca59@gmail.com)

Graphs included:

1. Growth in annual milksolids production
2. Milk price
3. Profit per cow
4. Profit per hectare
5. Cost of production (accounting)
6. Milk production per cow
7. Pasture as per cent of cow's diet
8. Pasture harvest
9. Total feed cost per litre
10. Total expenses per litre

All graphs are based on trendlines for the relevant time period.

Some international comparators are included as dashed lines.

Milk ratios are in energy corrected milk (ECM), corrected to 4.0% fat and 3.3% protein.

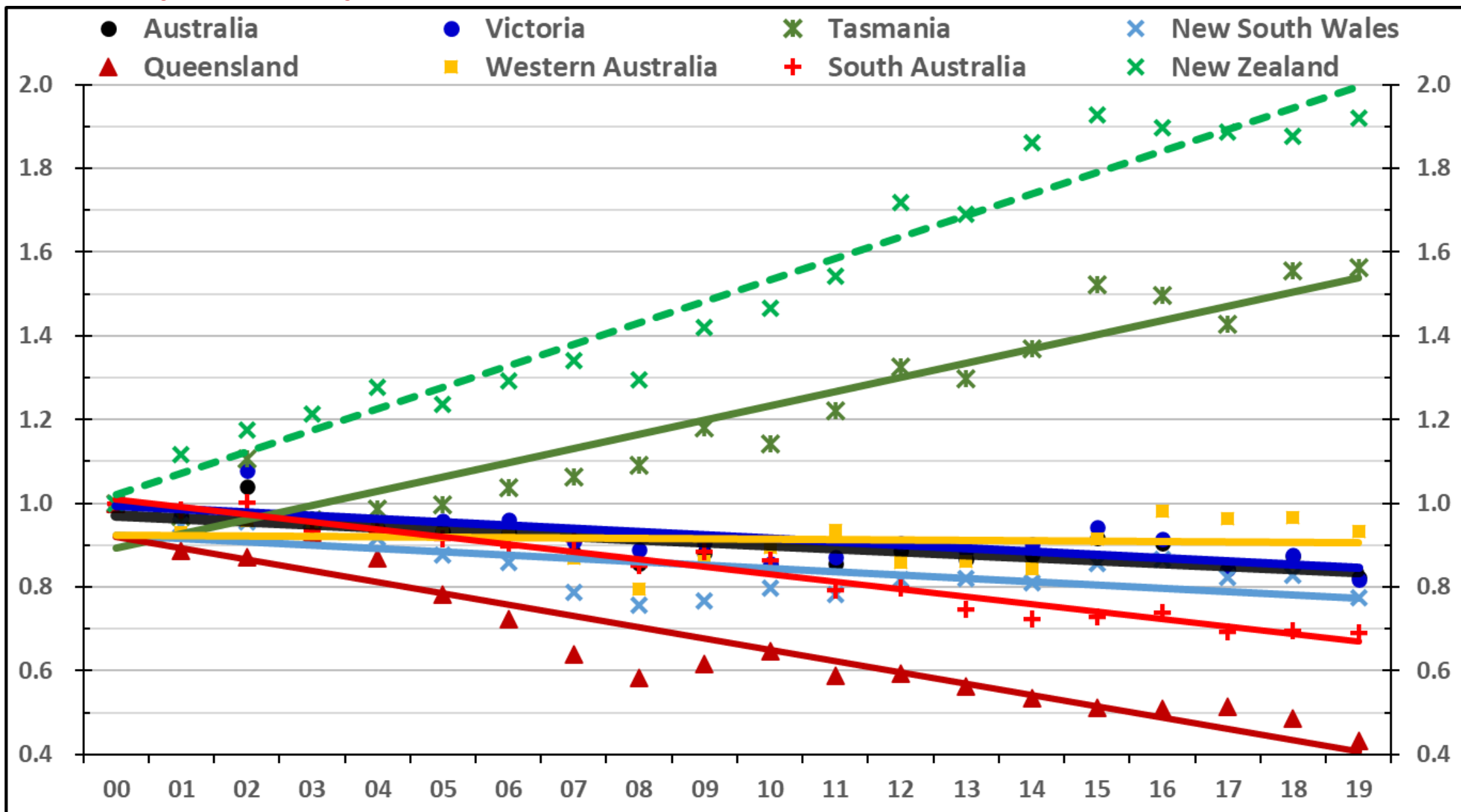
Further background to trends in Australian dairy farm performance available in the following papers:

Evaluating the Loss of Profitability and Declining Milk Production in the Australian Dairy industry [Link](#)

Key Determinants of Profitability for Pasture-based Dairy Farms [Link](#)

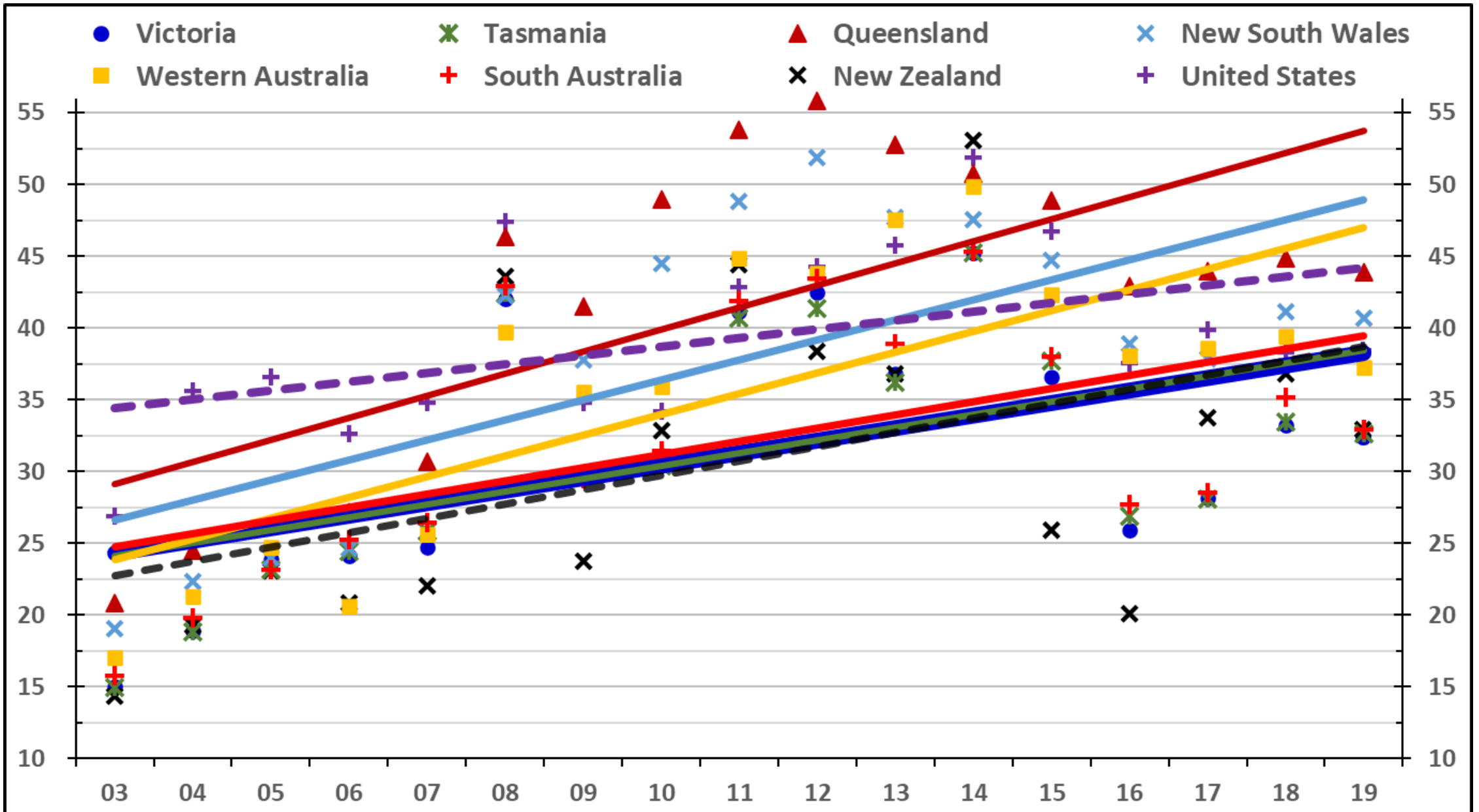
# Growth in annual milksolids production (1999/2000 Base = 1.00)

Source: Dairy Australia, DairyNZ



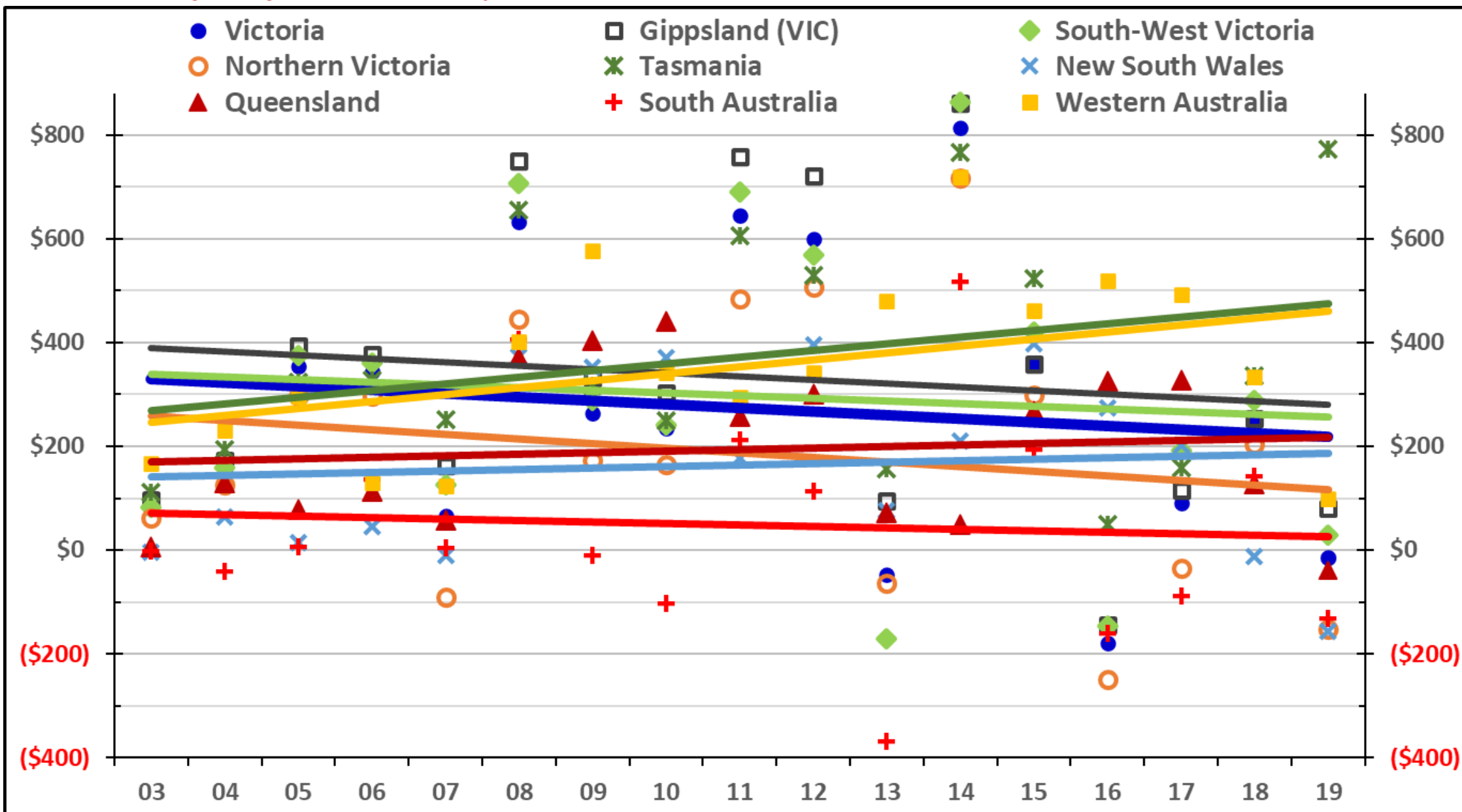
# Milk price (USD c/litre ECM = energy corrected milk)

Source: Dairy Australia, DairyNZ, USDA



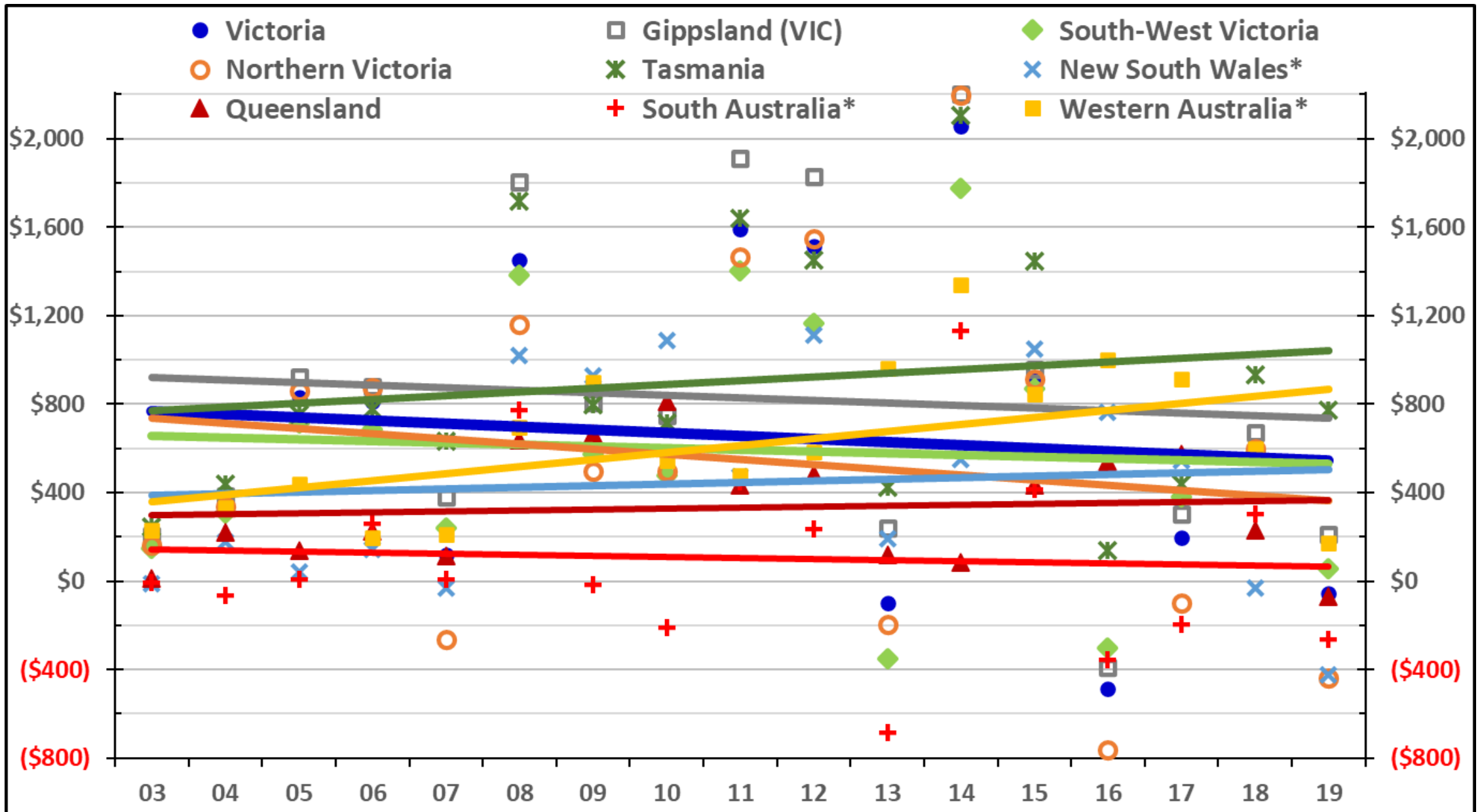
# Profit per cow (USD/cow)

Source: Red Sky, Dairy Farm Monitor Project, QDAS



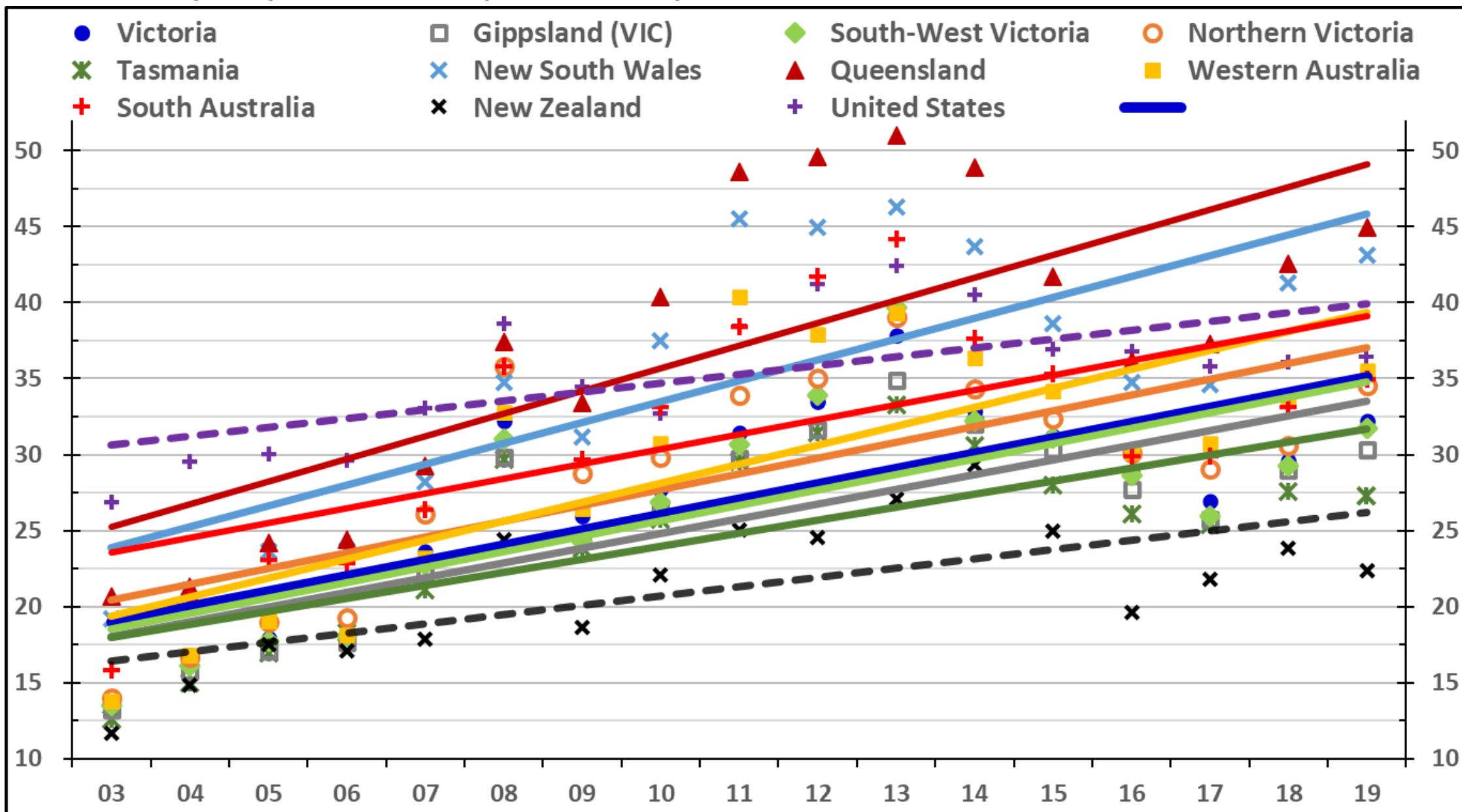
# Profit per hectare (USD/hectare)

Source: Red Sky, Dairy Farm Monitor Project, QDAS



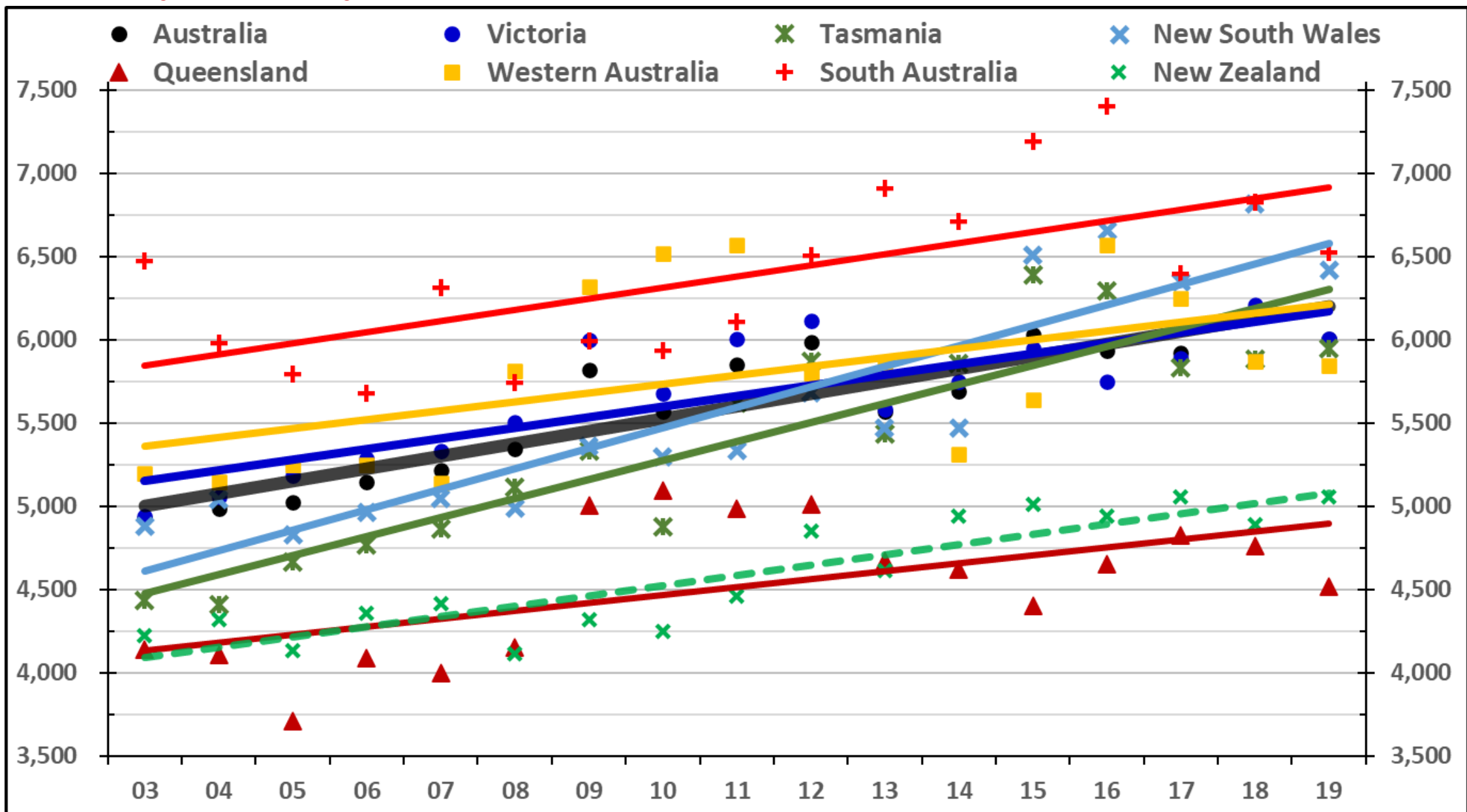
# Cost of production (USD c/litre ECM)

Source: Red Sky, Dairy Farm Monitor Project, QDAS, DairyBase (NZ), Genske Mulder (US)



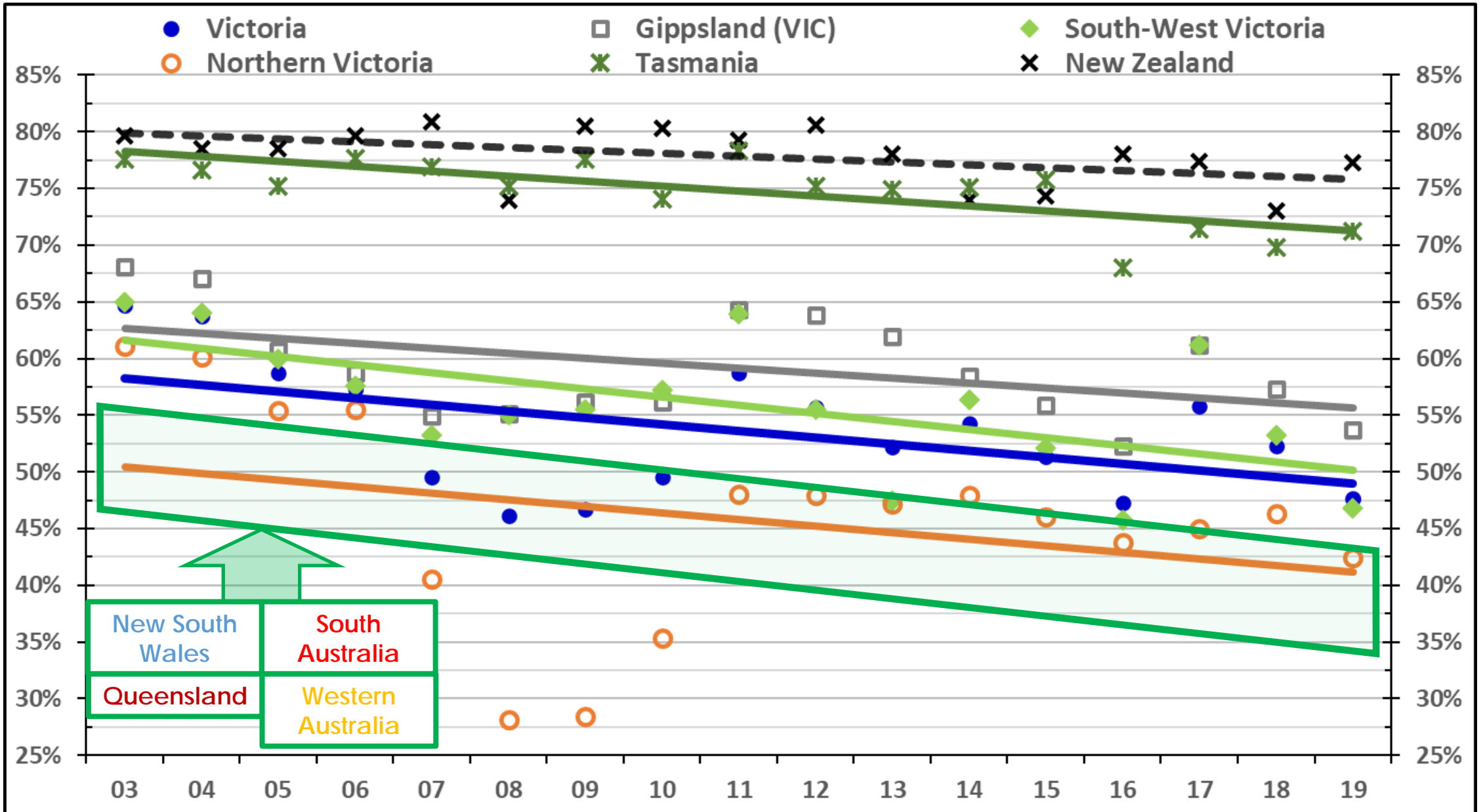
# Milk production per cow (litres ECM)

Source: Dairy Australia, DairyNZ



# Pasture as per cent of cow's diet

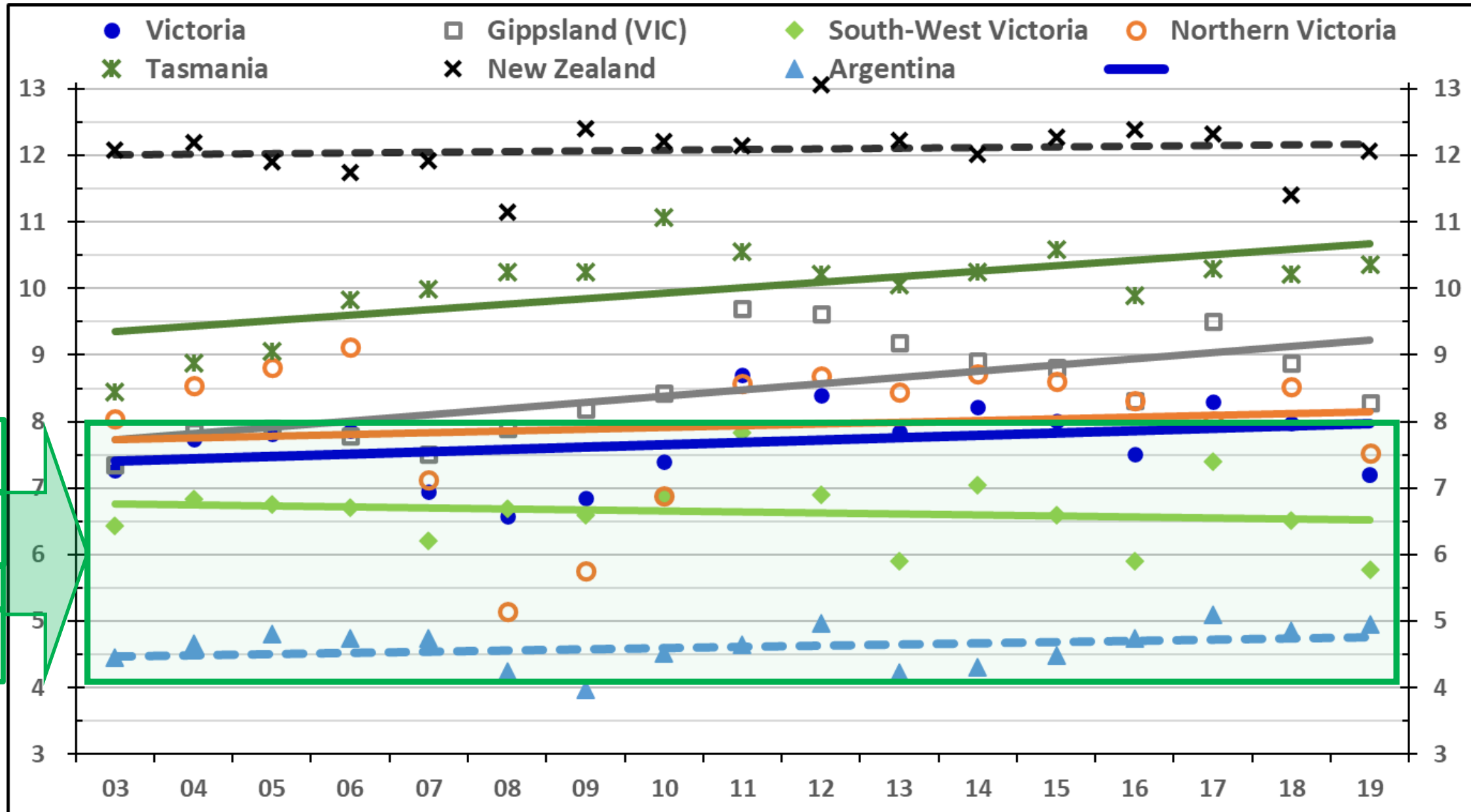
Source: Red Sky, Dairy Farm Monitor Project, QDAS, DairyBase (NZ)





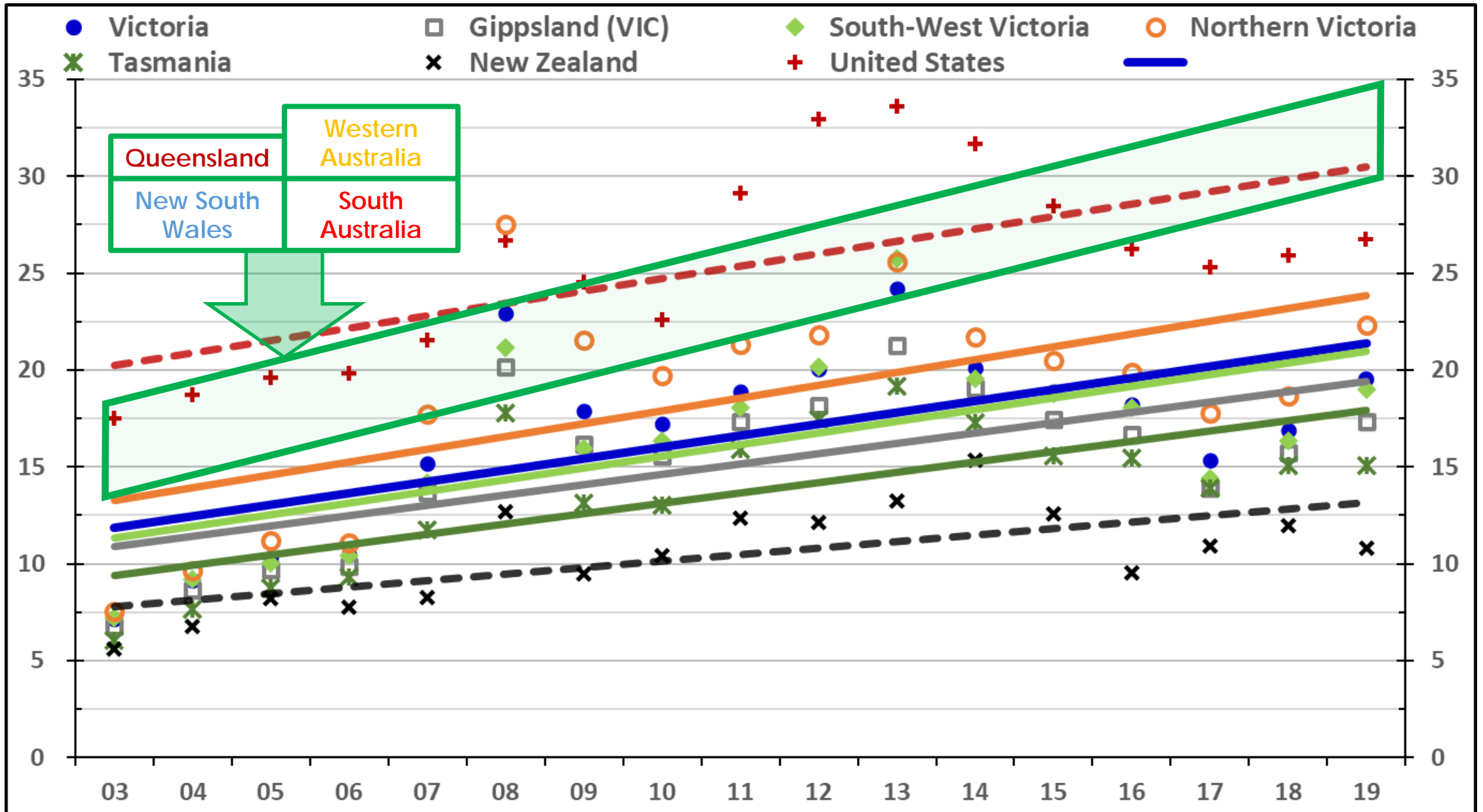
# Pasture harvest (tonne dry matter per hectare per year)

Source: Red Sky, Dairy Farm Monitor Project, QDAS, DairyBase (NZ), AACREA (ARG)



# Total feed (supplement & pasture) cost per litre (USD/litre ECM)

Source: Red Sky, Dairy Farm Monitor Project, QDAS, DairyBase (NZ), USDA, Genske Mulder (US)



# Total expenses per litre (USD/litre ECM)

Source: Red Sky, Dairy Farm Monitor Project, QDAS, DairyBase (NZ), USDA, Genske Mulder (US)

